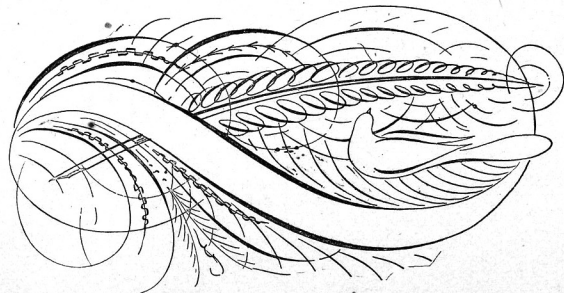
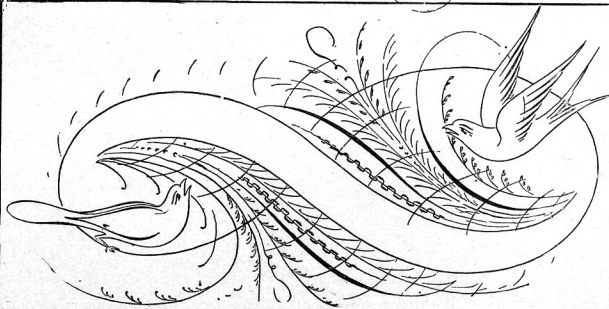
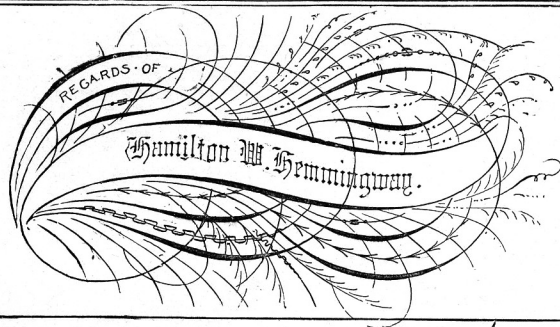
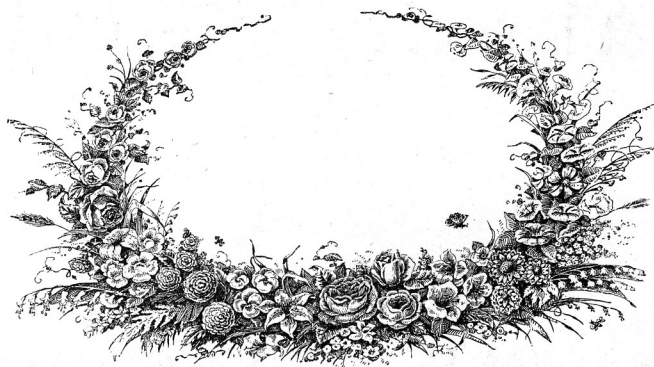
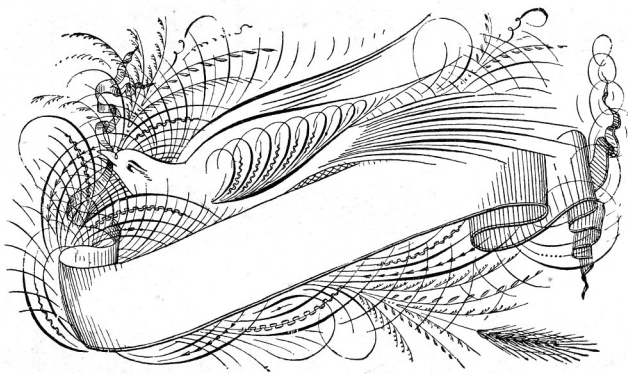
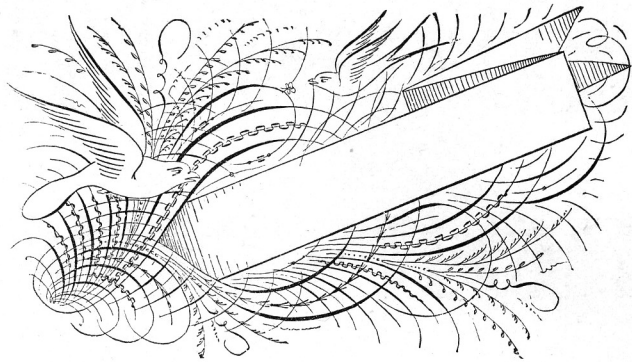
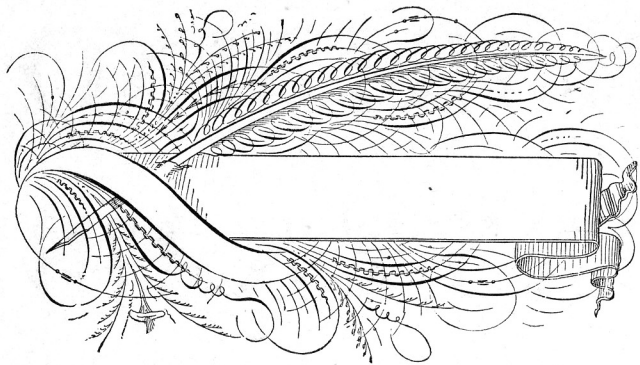


DESIGNS FOR Flourished Cards AND Albums.





ROMAN.

ORIGINAL PEN AND INK COPY FOR AMES' ALPHABETS.

A B C D E F G H I J K L M N O

P Q R S T U V W X Y Z & ; ! ? \$

a b c d e f g h i j k l m n o p q r s t u v

SPECIMEN.

W X Y Z

Specimen.

I II III IV V VI VII VIII IX X XV XXX C MD

ITALIC ROMAN.

ORIGINAL PEN AND INK COPY FOR AMES' ALPHABETS.

A B C D E F G H I J K L M N O

P Q R S T U V W X Y Z & ; ! ? \$

a b c d e f g h i j k l m n o p q r s t u v w

ALBUM.

xyz

Homes.

0 1 2 3 4 5 6 7 8 9

GOTHIC.
ORIGINAL PEN AND INK COPY FOR AMES' ALPHABETS.

A B C D E F G H I J K L M

N O P Q R S T U V W X Y

a b c d e f g h i j k l m n o p q r s t u v w x y z ; ! ?

1 2 3 4 5 Z & 6 7 8 9 0

Old English.

A B C D E F G H I K

L M N O P Q R S T U

V W X Y Z &

a b c d e f g h i j k l m n o p q r s t u v

w x 1 2 3 4 5 6 7 8 9 0 y z

German Text.

ſ ſ ſ ſ ſ ſ ſ ſ ſ ſ
ſ ſ ſ ſ ſ ſ ſ ſ ſ ſ
ſ ſ ſ ſ ſ ſ &
a b c d e f g h i j k l m n o p q r s
t u v w x y z.



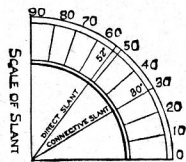
A B C D E F G H I J K L M N

O P Q R S T U V W X Y Z

a b c d e f g h i j k l m n o p q r s t u

v w x y z. & 1 2 3 4 5 6 7 8 9 0.

SCALE OF SLANT.



Main Slant.—A straight line slanting to the right of the vertical, forming an angle of 52° with the horizontal, gives the *main slant* for all written letters.

Connective Slant.—Curves which connect straight lines in small letters, in a medium style of writing, are usually made on an angle of 30° . This is called the *connective slant*. See diagram.

Base Line.—The horizontal line on which the writing rests is called the *base line*.

Head Line.—The horizontal line to which the short letters extend is called the *head line*.

Top Line.—The horizontal line to which the loop and capital letters extend is called the *top line*.

A Space in Height is the height of small *i*.

A Space in Width is the width of small *u*.

The distance between the small letters is $1\frac{1}{4}$ spaces, measured at head line, except in the *a*, *d*, *g* and *q*. The top of the *pointed oval* in these letters should be two spaces to the right of a preceding letter.

Upper and Lower Turns.—In the analysis of small letters, short curves occur as connecting links between the principles. These curves we call *turns*. When one

appears at the top of a letter, it is called an *upper turn*; when at the base, it is called a *lower turn*.

MOVEMENT EXERCISE.—All instruction in penmanship should be initiated with liberal use of movement exercises, which should be arranged and practiced with the view of facilitating upward and downward as well as lateral movement of the hand, and each and every lesson should be preceded with more or less practice upon movement exercises.

CARE IN PRACTICE.

In practicing upon movements and writing, it should be constantly borne in mind that it is not the amount of practice, so much as the careful and thoughtful effort to acquire precision and certainty, that determines the success of the writer.

It is often said that “practice makes perfect.” This is true if the term practice implies thoughtful, patient and persistent effort for improvement; otherwise it may be quite untrue.

Thoughtless scribbling tends rather to retard than to enhance the acquisition of good writing. Each time a copy has been carelessly repeated, incorrect or bad habits have been confirmed rather than corrected—a move backward instead of forward. This is a fact not sufficiently appreciated by teachers or pupils. Better far

MEDIEVAL.

A B C D E F G H I J K L M N
O P Q R S T U V W X Y Z &

VARIETY CAPITALS

A B C D E F G H I J K L M
N O P Q R S T U V W X Y Z

EGYPTIAN



German Round Hand.

A B C D E F G H I J K L M N O

P Q R S T U V W X Y Z

a b c d e f g h i j k l m n o p q r s t u v w

1 2 3 4 5

x y z.

6 7 8 9 0

Marking Alphabet.

A B C D E F G H I J K L M N

O P Q R S T U V W X Y Z &

a b c d e f g h i j k l m n o p q r s t

u v w x y z.



Specimen of Marking.

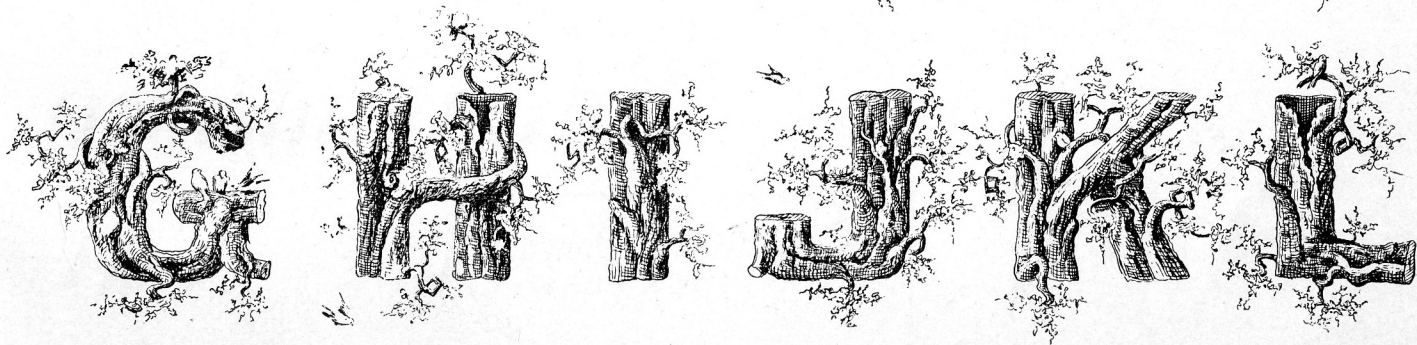
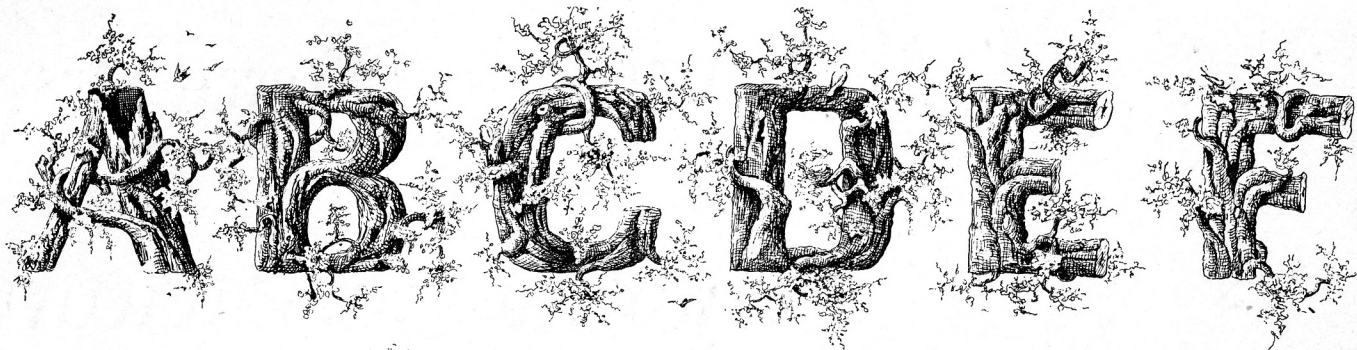
1679

Merch. Desp.

Manning & Stewart,
San Francisco,
Cal.

Penman's Art Journal
NEW YORK.

RUSTIC ALPHABET





A B C D E F G H
I J K L M N O P Q
R S T U V W X Y Z

a b c d e f g h i k l m n o p q r s t u v w
x y z

MONOGRAMS

